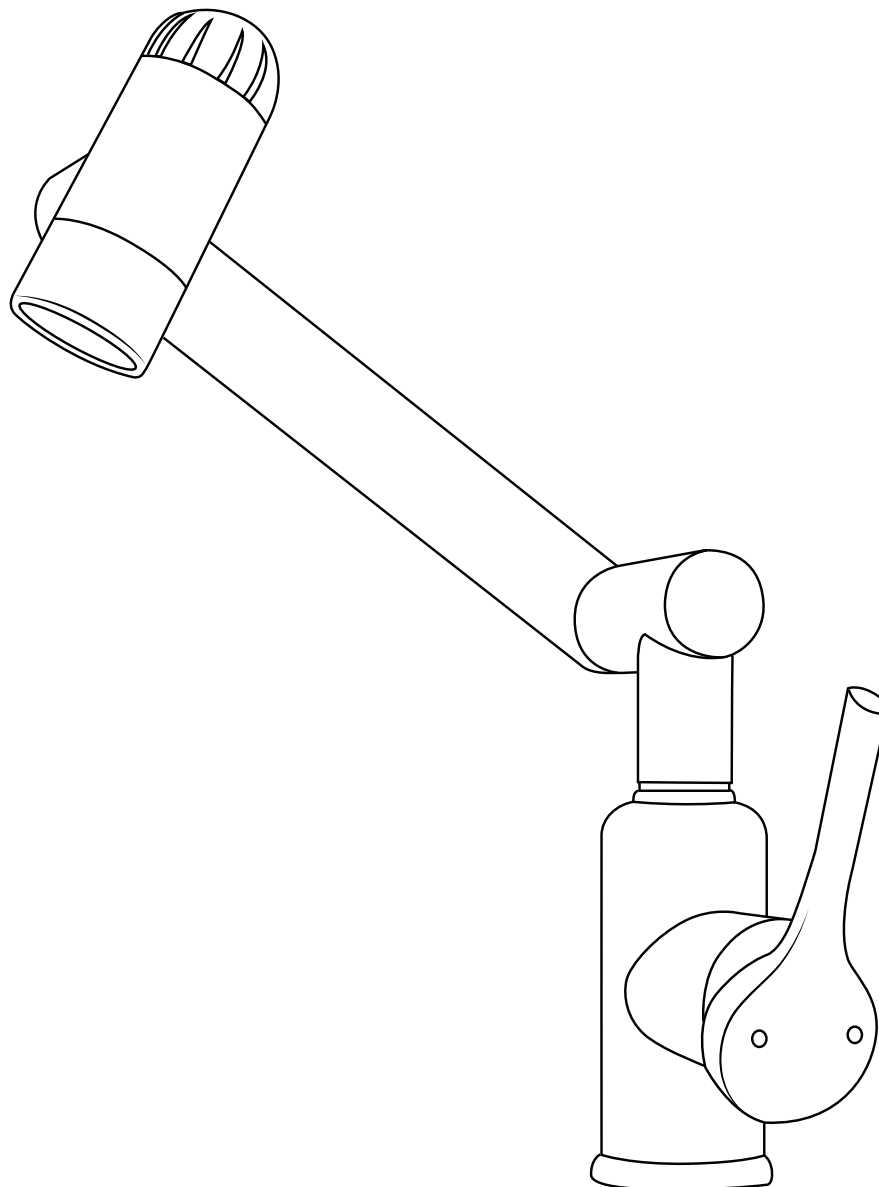


# **HAWKROWN®**

## Bathroom Rotatable Faucet



[info@hawkrown.com](mailto:info@hawkrown.com)

# **Congratulations on the purchase of your new Hawkrown bathroom faucet**

Please keep the box and packaging materials until your product is completely installed. If you have any questions, require technical assistance or have any problems with your product:



**DO NOT RETURN  
TO STORE**

**Please contact our Customer Service  
Team [info@hawkrown.com](mailto:info@hawkrown.com)**

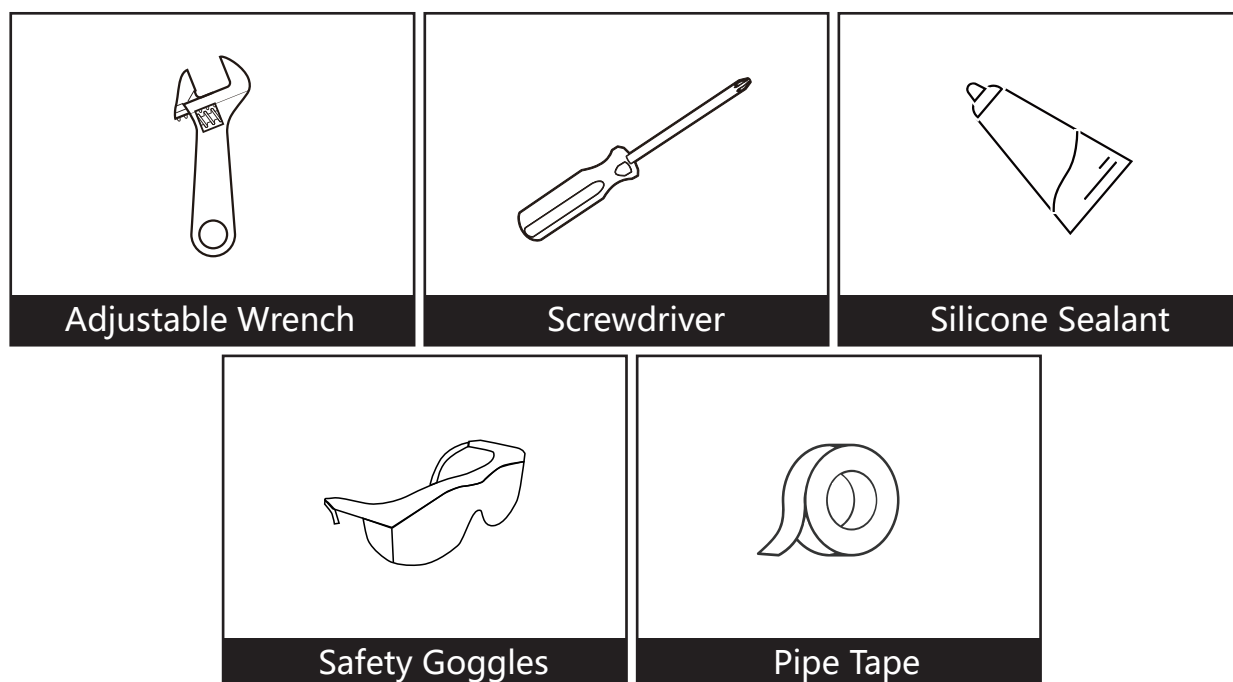
**PLEASE NOTE:**

Every bathroom faucet is thoroughly water flow tested at the factory to ensure optimal performance. As a result, slight water marks may remain, but they are definitely not a used item and will not affect performance. Simply wipe with a soft cloth to remove the residue.

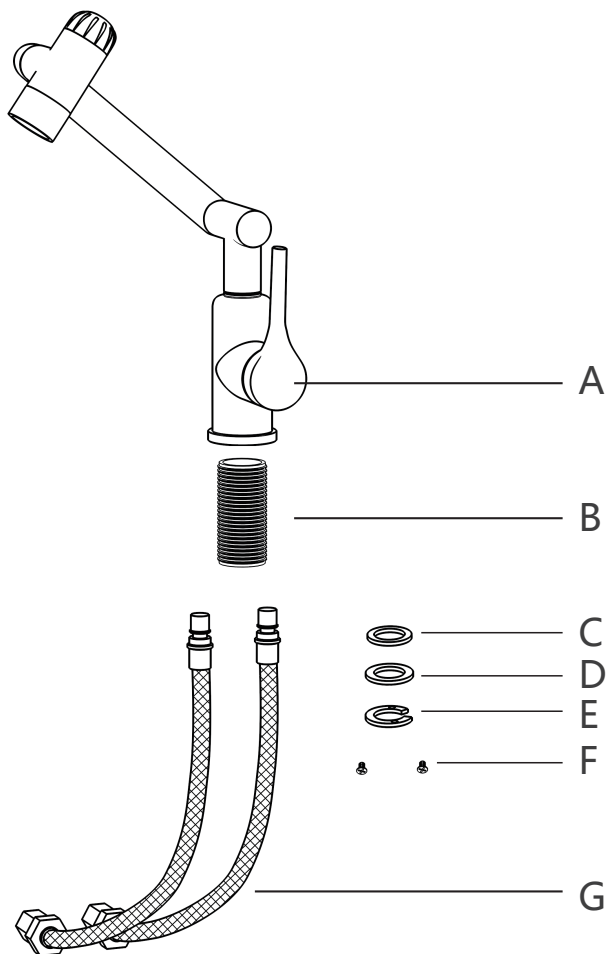
## Prior to Installation:

- Make sure you have all necessary parts by checking the diagram and parts list. If any part is missing or damaged, please contact Hawkrown Customer Service at [info@hawkrown.com](mailto:info@hawkrown.com).
- Turn off the hot and cold water supply at the angle stops and turn on the old faucet to release any built up pressure. Remove existing faucet. Clean sink or countertop to remove any debris, plumber's putty, or silicone.
- Flush angle stops to release any debris prior to installation.
- Pre-drilled hole size requirement 1.25" (min)
- Max counter top thickness: 1.7"

## Tools Required:

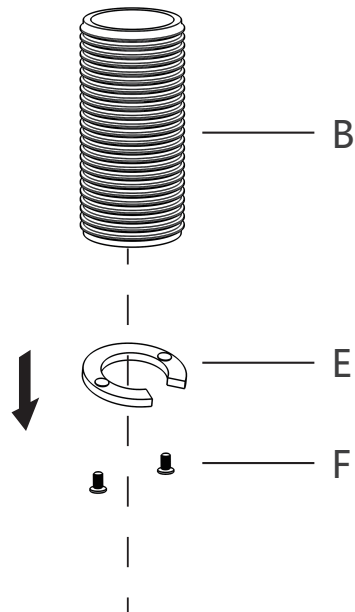


## Diagram and Parts List



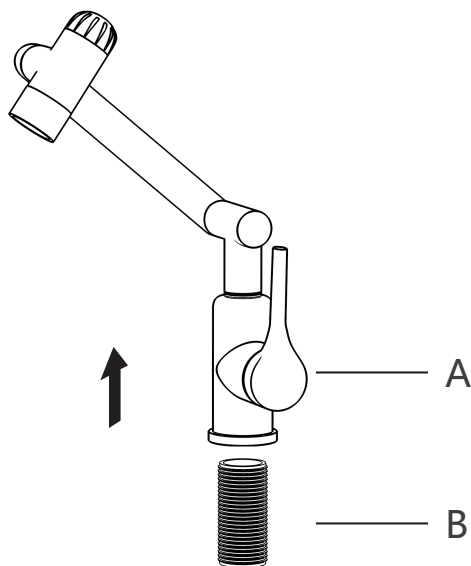
- A. Faucet Body
- B. Threaded Metal Pipe
- C. O Sealing Ring
- D. Metal Gasket
- E. Mounting Nut
- F. Mounting Screws
- G. Hot & Cold Water Pipes

## Step 1. Remove mounting hardware



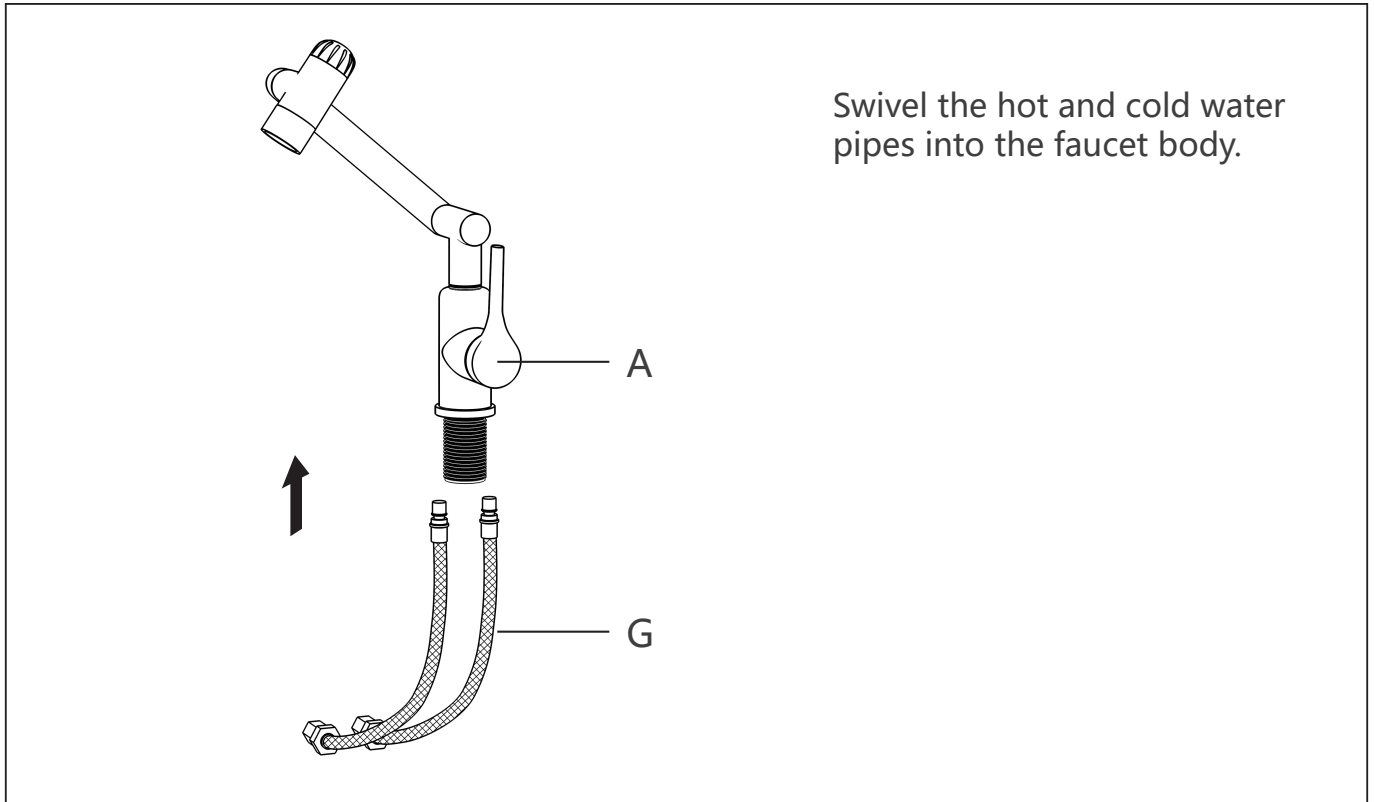
Shut off the water supply  
remove the old faucet. Clean  
the mounting surface. Remove  
mounting hardware (Mounting  
Nut & Mounting Screws) from  
threaded metal pipe

## Step 2. Installing the faucet assembly

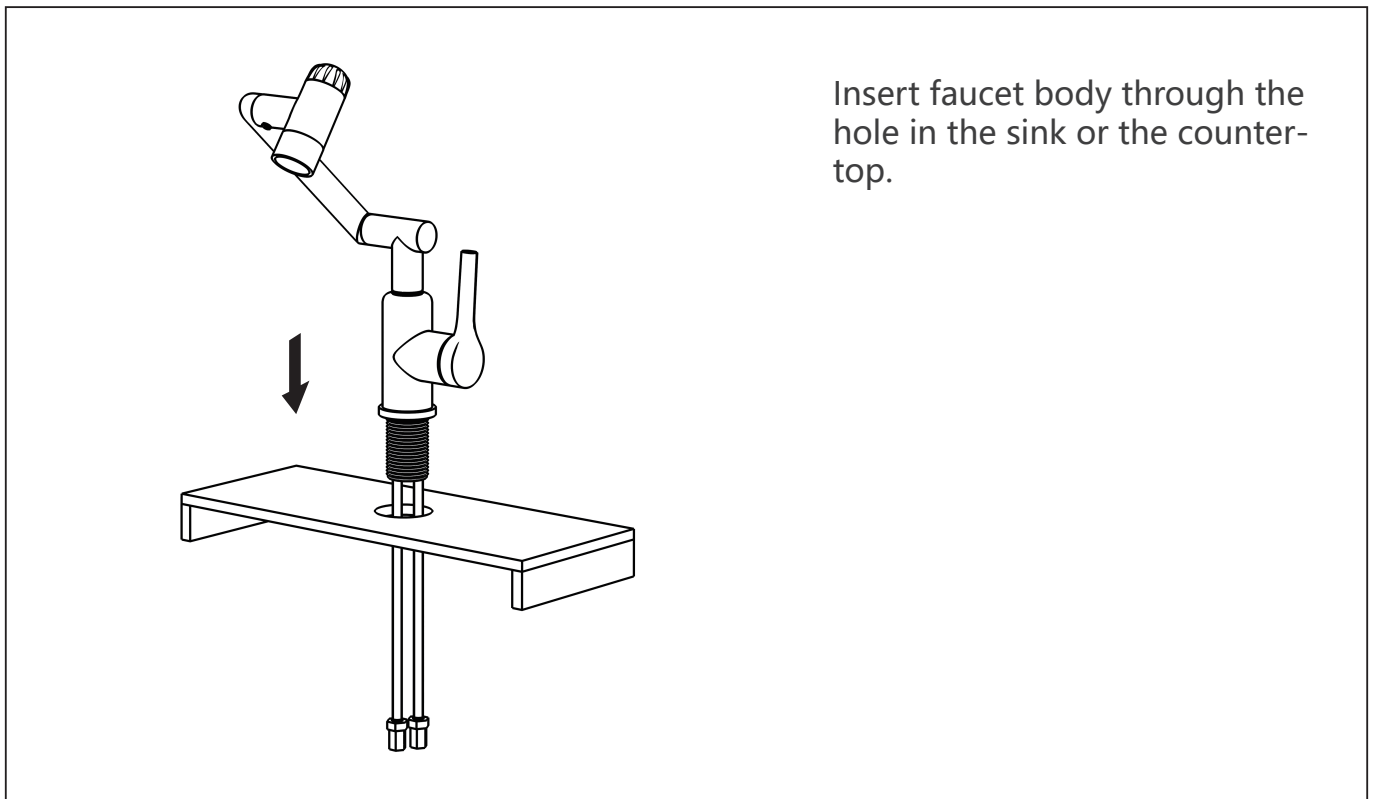


Install the the threaded metal  
pipe on the faucet body

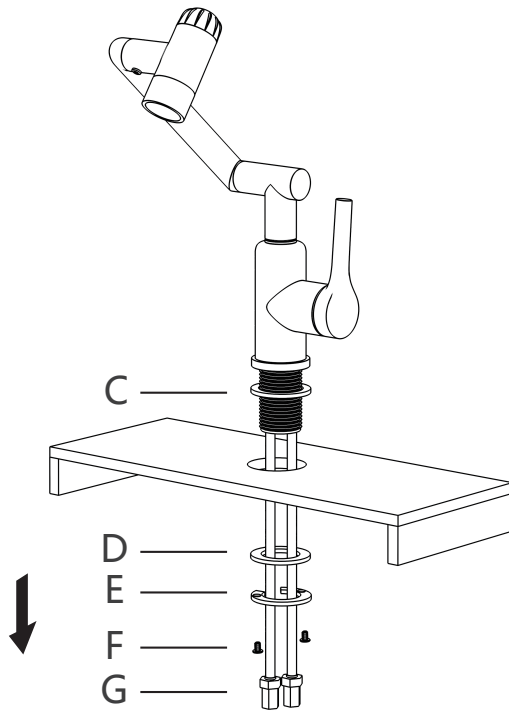
### Step 3. install hot and cold water pipes



### Step 4. Install faucet body to countertop



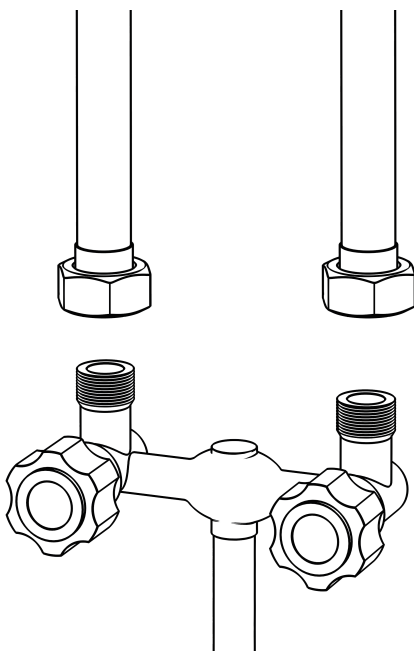
## Step 5. Install mounting hardware



Pass the O Sealing Ring, metal gasket and mounting hardware through the metal pipe in turn and tighten them.

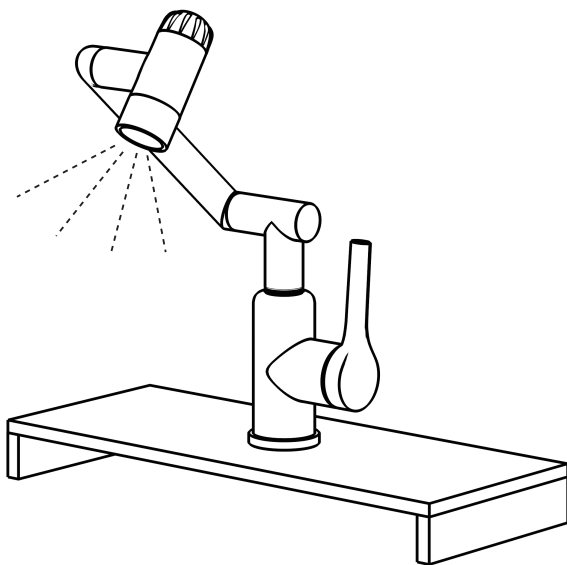
When the above assemblies through the hot and cold water pipes. Please refer to the picture below.

## Step 6. Making the waterline connections



Thread the nut on the supply line onto the outlet of the water supply valve and tighten with a wrench. Do not overtighten.

## Step 7. Turn the faucet on and check for leaks



Turn on angle stops, turn the faucet on and check for leaks.

(DO NOT TURN FAUCET ON BEFORE THE INSTALLATION IS COMPLETE)



## Trouble-Shooting

If you have followed the instructions carefully and your faucet still does not work properly , take the following corrective steps:

PROBLEM	CAUSE	ACTION
Leakage under faucet handle	Bonnet nut (11) has come loose	Remove the cover button (15) .Loosen set screw (14) with hex wrench(22) .Remove the handle.Unscrew cap (12).Tighten bonnet nut(11) with an adjustable wrench.
The aerator has an irregular or reduced water flow	The aerator is dirty or mis-fitted	Remove the aerator and check for debris.Ensure that the rubber washer is properly installed.
The water pressure is low.	The connector underneath the deck is clogged with debris  The aerator is clogged	Turn off the water supply and disconnect the connector/aerator.Unscrew the connector/aerator and clean under running water.Screw the connector/aerator back. Test water flow.If water pressure is still low then replace the connector/aerator.
There is a low flow of water.	The screen filter in the hose connectors is dirty.	Turn off the water supply at water valve and unscrew the hose connectors from water supply lines.Clean the screen in the water lines with hot water removing any debris or calcium build up.

## Care&Maintenance

To keep the product clean & shining, follow the steps below:

- 1.Rinse with clean water & dry with a soft cloth
- 2.Do not clean with soaps,acids,polish,abrasives or harsh cleaners
- 3.Do not use cloth with coarse surface
- 4.Unscrew the aerator and clean when necessary